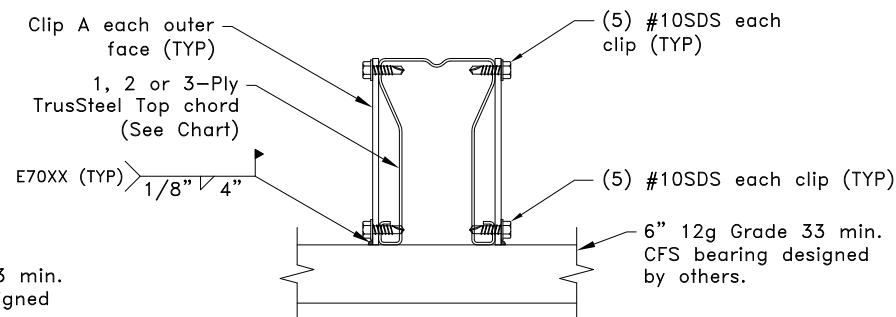
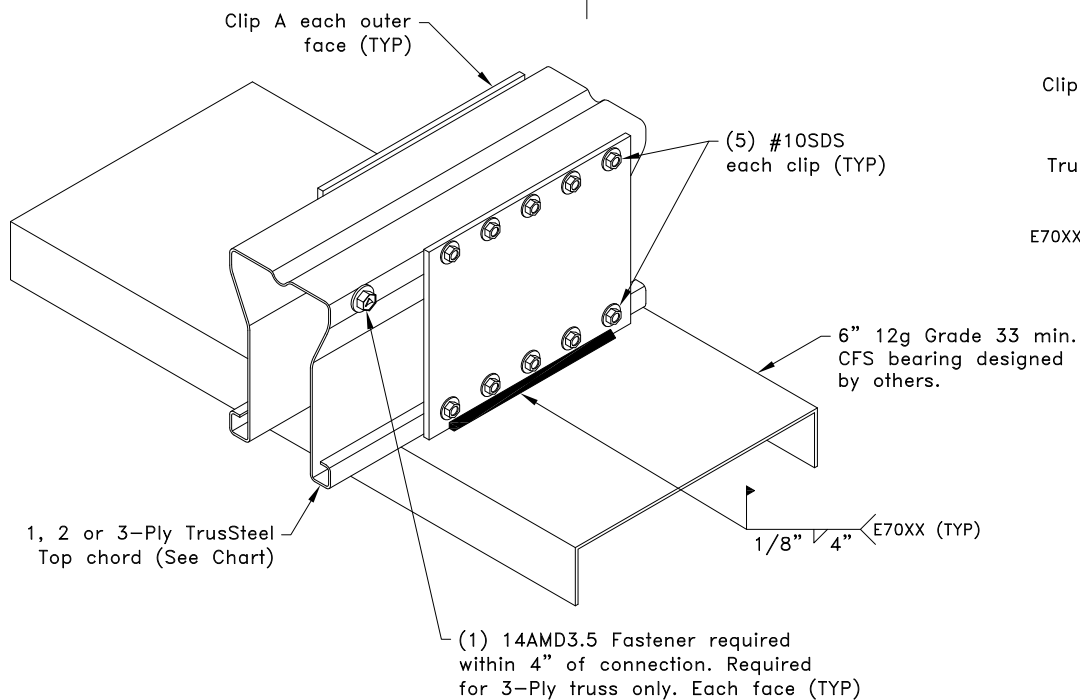
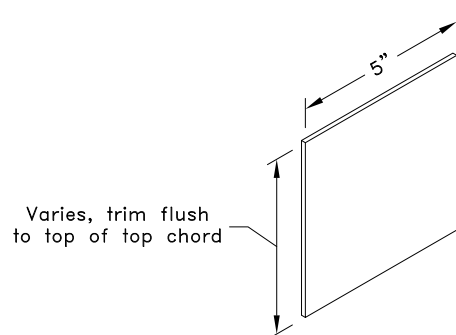


U



Allowable Loads lbs	
Chord	Uplift
43TSC3.00	3950



Clip A
16g ASTM A653 SS Grade 33 Class 1 G60
Bare metal thickness: $t = 0.0538$ "

General Notes:

1. SDS = Self-Drilling Tapping Screw
2. Screw end distance and edge distance is $9/32$ " minimum. Screw spacing is $9/16$ " minimum.
3. Attachment of second clip on opposite face of chord is identical to what is detailed.
4. Refer to TrusSteel Standard Detail TS020 for additional requirements.
5. U refers to uplift.
6. Refer to TrusSteel Technical Bulletin 98.10.05 titled "Repair of Galvanized Surfaces" to restore corrosion resistant properties of the connection after welding.
7. Cold-Formed Steel calculations are per the 2010 supplement to the AISI 2007 "North American Specification for the Design of Cold-Formed Steel Structural Members" (S100-07/S2-10).



www.TrusSteel.com

Florida: 2400 Lake Orange Drive, Suite 150 / Orlando, FL 32837 / (800) 755-6001
Missouri: 13723 Riverport Drive, Suite 200 / Maryland Heights, MO 63043 / (800) 326-4102

TrusSteel Truss to Structural Steel Top Plate

Alpine, a division of ITW Building Components Group, Inc. shall not be responsible for any performance failure in a connection due to a deviation from this detail. Any variation from this detail shall be approved in advance by Alpine, a division of ITW Building Components Group, Inc.

Custom Detail:

CD160205

Date:

02/29/16

Custom Detail Category:

Truss-to-Bearing Connection